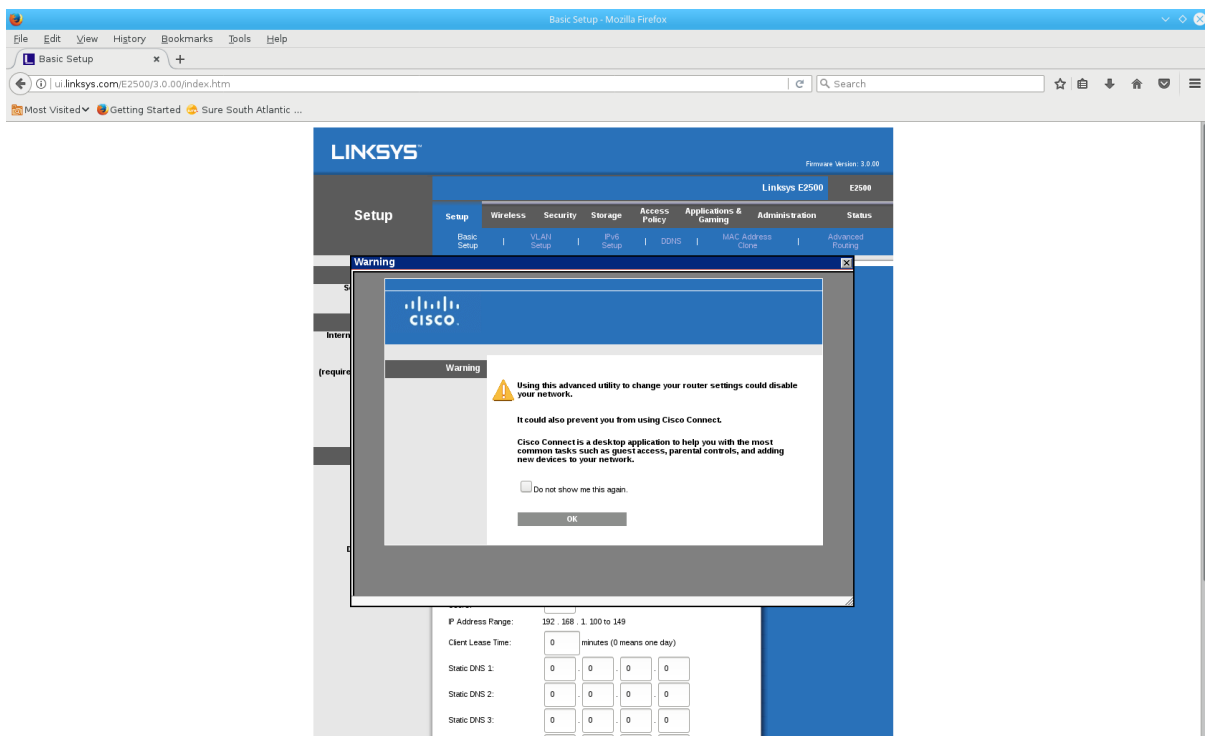


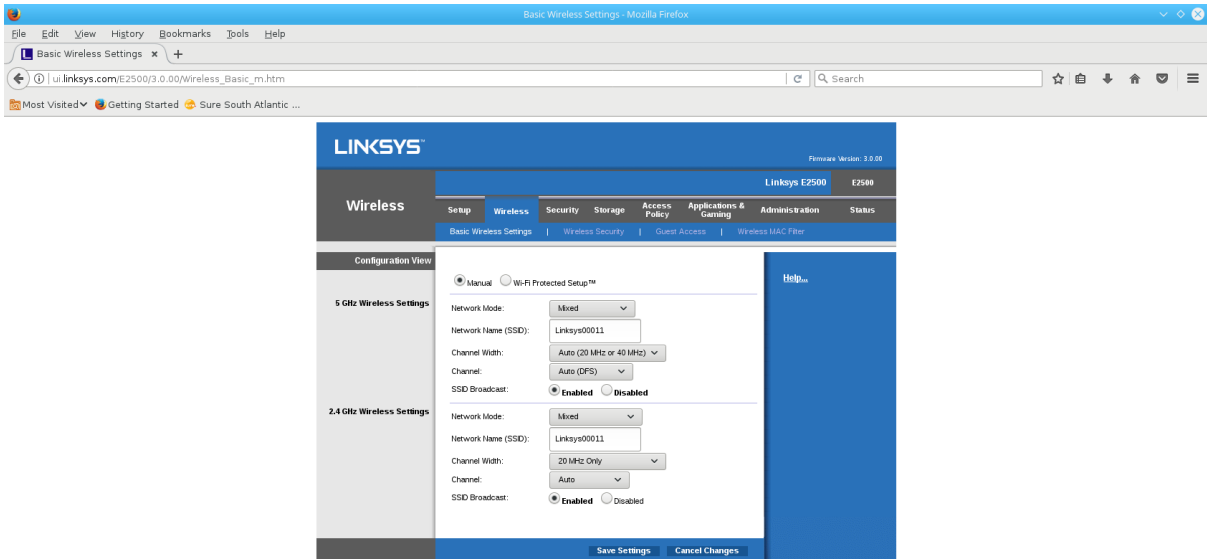
Changing the Wi-Fi Password on a Linksys Router

Note: This should be done on a PC, either desktop or laptop, which is physically connected to the router via an Ethernet cable. The screenshots are taken from a Linksys E2500 router. Other Linksys routers may differ.

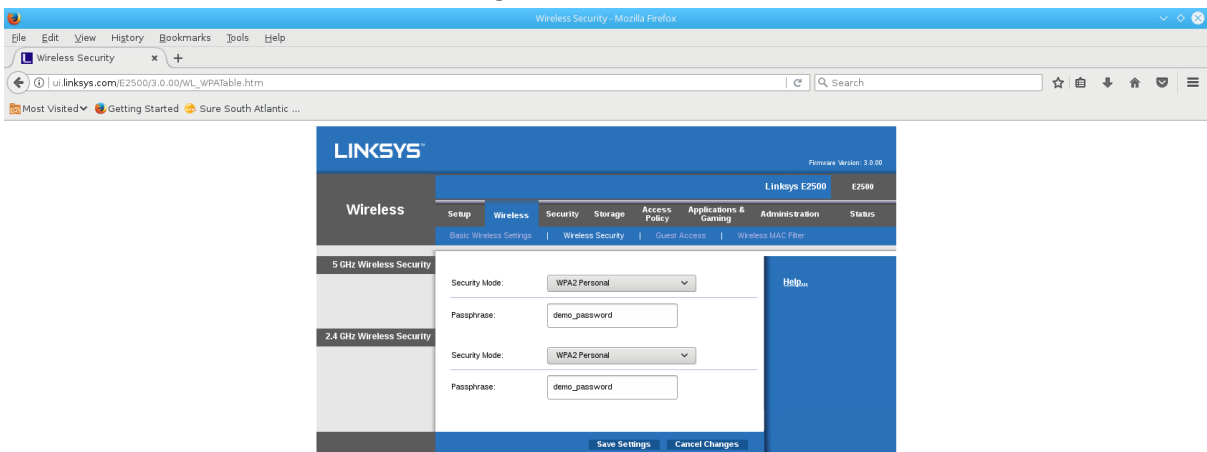
1. Open a web browser of your choice (Internet Explorer, Firefox, Chrome, etc.)
2. In the address bar, enter the following address: **192.168.1.1**
3. A dialog should appear, prompting for a password. If it does not, please make sure that the address bar only contains the address 192.168.1.1 or http://192.168.1.1
4. By default, the password is **admin** and there is no username. If the dialog does prompt for a username, then the username is **admin**.
5. After entering the username and password, a setup page should be displayed with a menu at the top. A warning may pop up stating that 'using this advanced utility to change your router settings could disable your network'. Click the **OK** button, and then click the **Wireless** option in the menu.



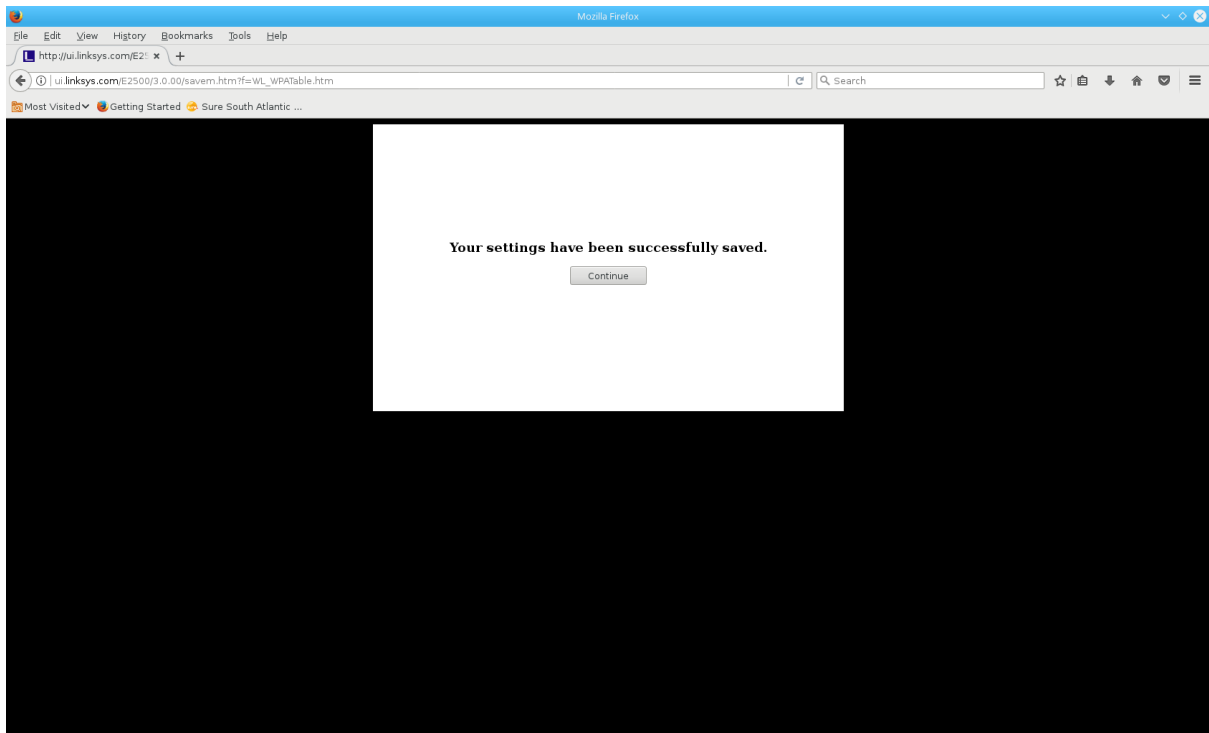
6. A page should appear that allows for the configuration of the Wi-Fi network, such as the SSID or name of the network. The menu at the top should also have a sub-menu with more options. Select the **Wireless Security** option in the sub-menu.



7. Another page should appear with a number of settings for the security of the Wi-Fi network. In particular, there are one or two fields named **Passphrase**, which contain the password for the Wi-Fi network. Clear the existing password from the fields and enter a new password. If there are two **Passphrase** fields, ensure that the new password is the same in both fields. When finished, click the **Save Settings** button.
- The password can be any word or phrase you wish, so long as it does not contain any spaces. Additionally, it is recommended that the password is longer than 8 characters and is hard to guess.



8. A page should appear saying that 'your settings have been successfully saved'. Click the **Continue** button.



9. The password change is complete. Close the browser window, and try connecting to the Wi-Fi network with the PC or another device. An authentication error should occur, in which case a dialog should appear, and the new password can be entered.